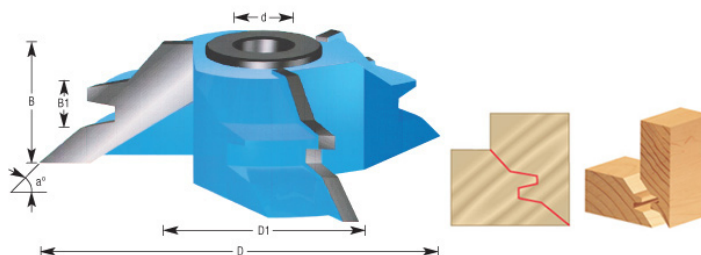
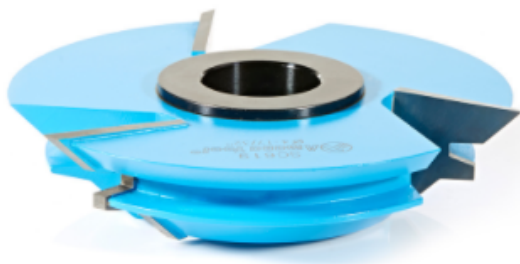


Edge of Arlington Saw & Tool, Inc.

124 South Collins
Arlington, TX 76010
Phone: 817-461-7171 • Fax: 817-795-6651
Toll Free: 888-461-7171
Email: info@eoasaw.com
Website: www.eoasaw.com

**Item #SC619, Amana Tool Carbide-Tipped 3-Wing
Lock Miter 45 Deg x 4-17/32 Dia x 1 in CH x 1 & 1-1/4
in Bore
\$163.05**

Thank you for shopping with us!



SPECIFICATIONS	
Manufacturer	Amana Tool
B1	3/8 in
Bore	1 in & 1 1/4 in
Diameter	4 17/32 in
Cut Height, Length, or Width	1 in
Diameter (D1)	2 31/64 in
Note	Rub collar for 1 1/4 in arbor only. Replacement 'T' bushing(s) #BU-550.
Angle	46 deg
Rub Collar	C-017