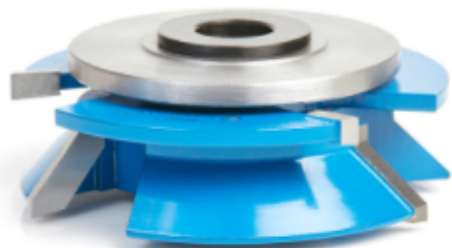


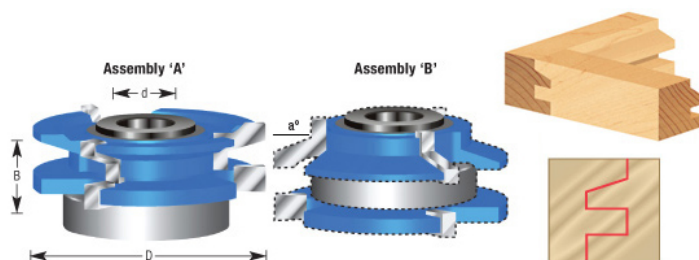
Edge of Arlington Saw & Tool, Inc.

124 South Collins
Arlington, TX 76010
Phone: 817-461-7171 • Fax: 817-795-6651
Toll Free: 888-461-7171
Email: info@eoasaw.com
Website: www.eoasaw.com



Item #SC597, Amana Tool Carbide-Tipped 3-Wing Beveled Reversible Stile & Rail 2-1/2 Dia x 1-1/4 x 1/2 & 3/4 Bore for 1-Inch Material \$75.46

Thank you for shopping with us! Designed for template shaping such as arched or cathedral doors, etc. Features a ball bearing center with a steel sleeve and is available with either 1/2," 3/4" , or 1-1/4" inside diameter.



SPECIFICATIONS	
Manufacturer	Amana Tool
Diameter	2 1/2 in
Cut Height, Length, or Width	1 1/4 in
Bore	1/2 in & 3/4 in
Replacement Parts	47757 (42mm x 3/4 in x 9mm)
Radius	--
Type	Bevel
Angle	45 deg