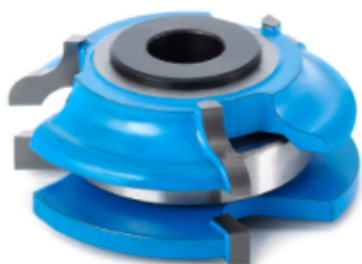


## Edge of Arlington Saw & Tool, Inc.

124 South Collins  
Arlington, TX 76010  
Phone: 817-461-7171 • Fax: 817-795-6651  
Toll Free: 888-461-7171  
Email: [info@eoasaw.com](mailto:info@eoasaw.com)  
Website: [www.eoasaw.com](http://www.eoasaw.com)



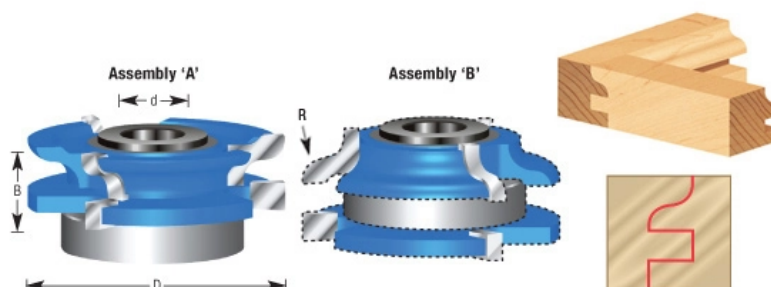
### Item #SC589, Amana Tool Carbide-Tipped 3-Wing Ogee Reversible Stile & Rail 2-13/32 x 1 in x 1/2 & 3/4 Bore for 1-Inch Material

**\$75.46**

Thank you for shopping with us!

Designed for template shaping such as arched or cathedral doors, etc.

Features a ball bearing center with a steel sleeve and is available with either 1/2," 3/4" , or 1-1/4" inside diameter.



SPECIFICATIONS	
Manufacturer	Amana Tool
Diameter	3 13/32 in
Cut Height, Length, or Width	1 in
Bore	1/2 in & 3/4 in
Replacement Parts	47757 (42mm x 3/4 in x 9mm)
Radius	3/16 in
Type	Convex/Concave
Angle	--