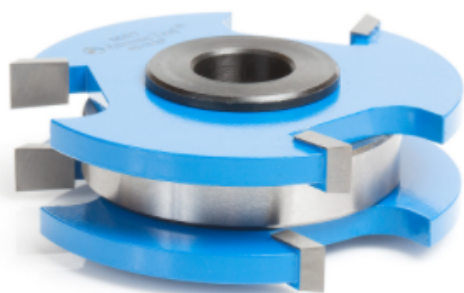


Edge of Arlington Saw & Tool, Inc.

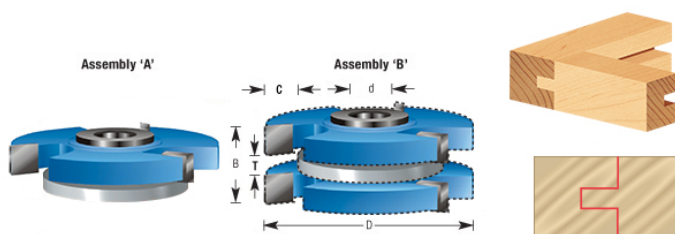
124 South Collins
Arlington, TX 76010
Phone: 817-461-7171 • Fax: 817-795-6651
Toll Free: 888-461-7171
Email: info@eoasaw.com
Website: www.eoasaw.com



**Item #SC577, Amana Tool Carbide-Tipped 3-Wing
Tongue & Groove Reversible Stile & Rail 2-13/32 x 3/4
x 1/2 & 3/4 Bore for 3/4 Inch Material
\$79.23**

Thank you for shopping with us!

Designed for template shaping such as arched or cathedral doors, etc.
Features a ball bearing center with a steel sleeve and is available with
either 1/2," 3/4" , or 1-1/4" inside diameter.



SPECIFICATIONS	
Manufacturer	Amana Tool
Diameter	2 13/32 in
Cut Height, Length, or Width	3/4 in
Bore	1/2 in & 3/4 in
Replacement Parts	47757 (42mm x 3/4 in x 9mm)
Radius	--
Type	Tongue & Groove
Angle	--