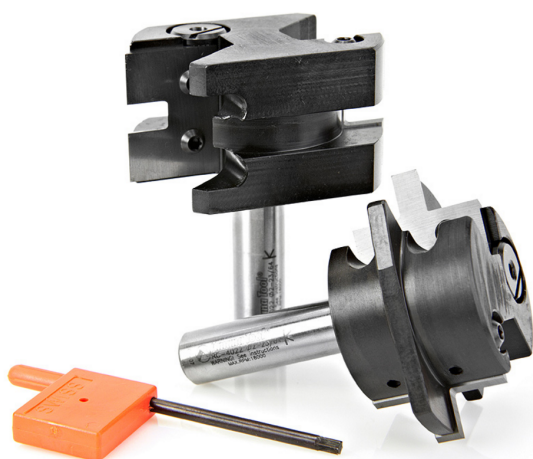


## Edge of Arlington Saw & Tool, Inc.

124 South Collins  
Arlington, TX 76010  
Phone: 817-461-7171 • Fax: 817-795-6651  
Toll Free: 888-461-7171  
Email: [info@eoasaw.com](mailto:info@eoasaw.com)  
Website: [www.eoasaw.com](http://www.eoasaw.com)

---



**Item #RC-4022, Amana Tool " Instile™ " Mission Style Adjustable Insert Tongue & Groove 2-3/8" Dia x 1-3/16" CH x 1/2" Shank Set (Industrial)**  
**\$333.54**

Thank you for shopping with us! Amana Tool " Instile™ " Mission Style Adjustable Insert Tongue & Groove 2-3/8" Dia x 1-3/16" CH x 1/2" Shank Set Insert Carbide; for 5/8" to 1 3/16" Material Adjust the panel groove width from 5.4mm to 6.6mm using the easy-to-use adjustment knob—no shims necessary. The perfect fix for undersized plywood flat panel " Mission Style, Arts & Crafts, and Shaker" cabinet doors! Set includes unique adjustment system: - Designed to cut precise grooves to provide undersized plywood veneered panels with a snug rattle-free fit. -Each set includes 2 pieces (1 for stile cuts and 1 for rail cuts) Replacement knives sold individually (2 replacement knives required per bit). Replacement screw #67117 and key #5005

SPECIFICATIONS	
Manufacturer	Amana Tool
Diameter	2 3/8 in
Cut Depth	3/8 in
Cut Height, Length, or Width	1 3/16 in
Knives	RCK-330, RCK-332, RCK-334, RCK-336
Replacement Parts	Screw #67117, Key #5005
Overall Length	2 15/16 in
Shank	1/2 in