

Edge of Arlington Saw & Tool, Inc.

124 South Collins
Arlington, TX 76010
Phone: 817-461-7171 • Fax: 817-795-6651
Toll Free: 888-461-7171
Email: info@eoasaw.com
Website: www.eoasaw.com



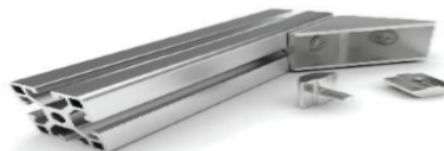
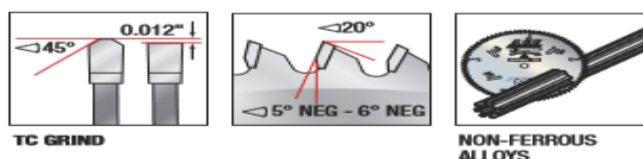
Item #MD6-605, Amana A.G.E. Series Non-Ferrous for Thin Walled Aluminum Saw Blades: TCG Grind \$100.32

Thank you for shopping with us!

Superior-Finish cuts in aluminum & non-ferrous metals.

Designed specifically for cutting relatively thin walled (less than 1/4" thick) aluminum and non-ferrous extrusions and frames. Use a coolant or blade wax and clamp down the work piece when cutting non-ferrous metals.

Warning: Never attempt to cut ferrous metals (steel, iron, etc.) with these blades.



| SPECIFICATIONS | |
|----------------|------------|
| Manufacturer | Amana Tool |
| Diameter | 6 1/4 in |
| Bore | 5/8 in |
| Grind | TC |

SPECIFICATIONS

| | |
|-------------------|----------------------------------|
| Hook Angle | -5 deg |
| Kerf | 0.079 in |
| Note | 5/8 arbor with diamond knockout. |
| Pinholes | -- |
| Plate | 0.063 in |
| Teeth | 60 |