

Edge of Arlington Saw & Tool, Inc.

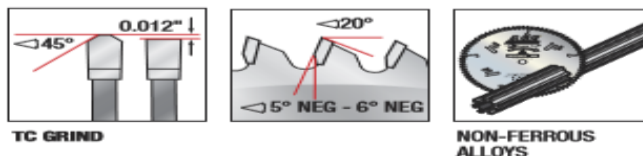
124 South Collins
 Arlington, TX 76010
 Phone:817-461-7171 • Fax: 817-795-6651
 Toll Free: 888-461-7171
 Email: info@eoasaw.com
 Website: www.eoasaw.com





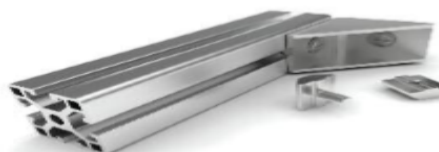
Item #MD5-505, Amana A.G.E. Series Non-Ferrous for Thin Walled Aluminum Saw Blades: TCG Grind \$68.93

Thank you for shopping with us!

Superior-Finish cuts in aluminum & non-ferrous metals. Designed specifically for cutting relatively thin walled (less than 1/4" thick) aluminum and non-ferrous extrusions and frames. Use a coolant or blade wax and clamp down the work piece when cutting non-ferrous metals. MD5-505 includes bushing from 20mm to 10mm. **Warning:** Never attempt to cut ferrous metals (steel, iron, etc.) with these blades.



-  **NON-FERROUS ALLOYS** EXCELLENT ✓
-  **THIN-WALLED PHENOLIC & HARD PLASTIC** EXCELLENT ✓
-  **ALUMINUM** EXCELLENT ✓
-  **BRASS/COPPER** EXCELLENT ✓



SPECIFICATIONS	
Manufacturer	Amana Tool
Diameter	5 3/8 in
Bore	20 mm
Grind	TC
Hook Angle	-5 deg
Kerf	0.055 in
Note	MD5-505 includes bushing from 20mm to 10mm.
Pinholes	--
Plate	0.039 in

SPECIFICATIONS

Teeth

50