

**Edge of Arlington Saw & Tool, Inc.**

124 South Collins

Arlington, TX 76010

Phone: 817-461-7171 • Fax: 817-795-6651

Toll Free: 888-461-7171

Email: [info@eoasaw.com](mailto:info@eoasaw.com)

Website: [www.eoasaw.com](http://www.eoasaw.com)

---



**Item #MD12-963TB, Amana A.G.E. Series Thin Kerf Double-Sided Melamine Saw Blades: H-ATB Grind**  
**\$131.48**

Thank you for shopping with us!

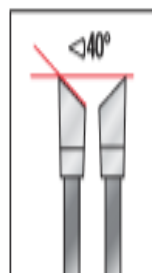
**Smooth, clean cuts in double-sided melamine.**

Designed for chip-free cuts in double-sided melamine and veneered sheet goods on saws without a scoring unit. The H-ATB tooth geometry slices cleanly through fragile coatings and laminates. The high bevel will not "violate" the bottom laminate upon exiting the cut, which causes "blow-out." Thin kerf blades reduce waste in expensive materials and require less horsepower to operate. Extra hard sub-micrograin carbide tips for long life.

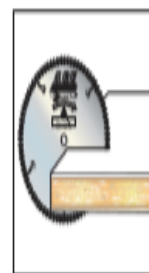
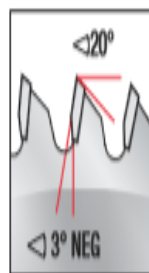
MD10-803TB: One of Amana's most popular blades.

**Warning:** Not recommended for cutting non-ferrous alloys.

	NOT RECOMMENDED	FAIR	GOOD	EXCELLENT
MELAMINE				
LAMINATE				
CROSSCUT				
PLYWOOD				
CHIPBOARD				
RIPPING				
NON-FERROUS ALLOYS				



**H-ATB GRIND**  
 HIGH OR ACUTE ANGLE ALTERNATE  
 TOP BEVEL



**MELAMINE SINGLE &  
 DOUBLE SIDED**

## SPECIFICATIONS

<b>Manufacturer</b>	Amana Tool
<b>Bore</b>	1 in
<b>Diameter</b>	12 in
<b>Grind</b>	H-ATB
<b>Kerf</b>	0.091 in
<b>Note</b>	One of Amana's most popular blades.
<b>Plate</b>	0.071 in
<b>RPM</b>	4,900
<b>Teeth</b>	96
<b>Hook Angle</b>	-3 deg