

Edge of Arlington Saw & Tool, Inc.

124 South Collins
Arlington, TX 76010
Phone: 817-461-7171 • Fax: 817-795-6651
Toll Free: 888-461-7171
Email: info@eoasaw.com
Website: www.eoasaw.com



Item #MD12-105, Amana A.G.E. Series Non-Ferrous for Thin Walled Aluminum Saw Blades: TCG Grind \$144.87

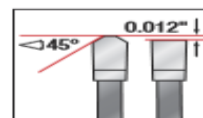
Thank you for shopping with us!

Superior-Finish cuts in aluminum & non-ferrous metals.

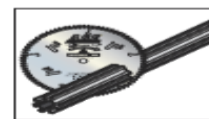
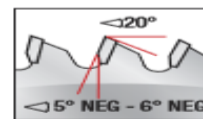
Designed specifically for cutting relatively thin walled (less than 1/4" thick) aluminum and non-ferrous extrusions and frames. Use a coolant or blade wax and clamp down the work piece when cutting non-ferrous metals.

MD12-105: One of Amana's most popular saw blades.

Warning: Never attempt to cut ferrous metals (steel, iron, etc.) with these blades.

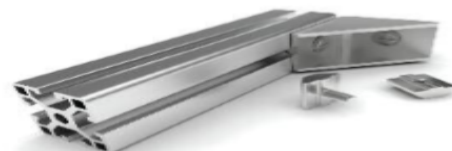


TC GRIND



NON-FERROUS ALLOYS

	NON-FERROUS ALLOYS	EXCELLENT ✓
	THIN-WALLED PHENOLIC & HARD PLASTIC	EXCELLENT ✓
	ALUMINUM	EXCELLENT ✓
	BRASS/COPPER	EXCELLENT ✓



SPECIFICATIONS

Manufacturer	Amana Tool
Diameter	12 in
Bore	1 in
Grind	TC
Hook Angle	-5 deg

SPECIFICATIONS	
Kerf	0.126 in
Note	One of Amana's most popular saw blades.
Pinholes	--
Plate	0.098 in
Teeth	100