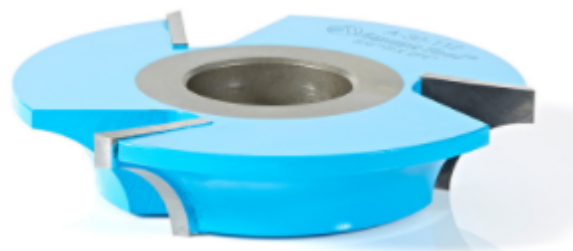


## Edge of Arlington Saw & Tool, Inc.

124 South Collins  
Arlington, TX 76010  
Phone: 817-461-7171 • Fax: 817-795-6651  
Toll Free: 888-461-7171  
Email: [info@eoasaw.com](mailto:info@eoasaw.com)  
Website: [www.eoasaw.com](http://www.eoasaw.com)

---



**Item #A-30-112, Amana Tool Carbide-Tipped 3-Wing Heavy-Duty Corner Round 5/8 Radius x 4 Dia x 7/8 x 1-1/4 Bore \$104.27**

Thank you for shopping with us!  
Designed for template shaping such as arched or cathedral doors, etc.

SPECIFICATIONS	
Manufacturer	Amana Tool
Bore	
Cut Height, Length, or Width	7/8 in
Diameter (D1)	2 3/4 in
Note	--
Radius	5/8 in
Style	Corner Round