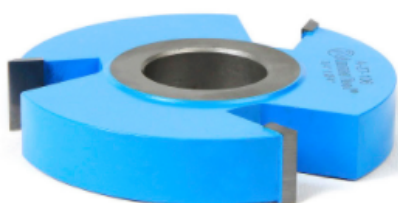


Edge of Arlington Saw & Tool, Inc.

124 South Collins
Arlington, TX 76010
Phone: 817-461-7171 • Fax: 817-795-6651
Toll Free: 888-461-7171
Email: info@eoasaw.com
Website: www.eoasaw.com



Item #A-27-106, Amana Tool Carbide-Tipped 3-Wing Heavy-Duty Rabbeting 4 Dia x 3/4 x 1-1/4 inches Bore

\$99.91

Thank you for shopping with us!

.

Over 250 different cutters for all your shaping needs. Extra-thick carbide tips offer many resharpenings and longer tool life. RPM rating: 12,000 and under.



SPECIFICATIONS

Manufacturer	Amana Tool
Bore	1 1/4 in
Cut Height, Length, or Width	3/4 in
Note	--