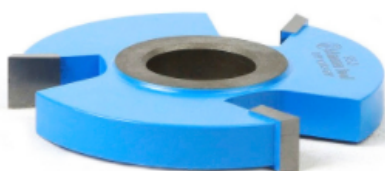


## Edge of Arlington Saw & Tool, Inc.

124 South Collins  
Arlington, TX 76010  
Phone: 817-461-7171 • Fax: 817-795-6651  
Toll Free: 888-461-7171  
Email: [info@eoasaw.com](mailto:info@eoasaw.com)  
Website: [www.eoasaw.com](http://www.eoasaw.com)

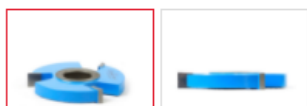
---



### Item #953, Amana Tool Carbide-Tipped 3-Wing Straight Edge 2-5/8 Dia x 3/8 x 1/2 & 3/4 Bore \$73.99

Thank you for shopping with us!

Over 250 different cutters for all your shaping needs. Extra-thick carbide tips offer many resharpenings and longer tool life. RPM rating: 12,000 and under. Cutters are furnished with either 1/2", 3/4", or 1 1/4" bore.



Cutters with 3/4" bore include 2 reduction bushings (1/2" x 3/4" ), which will reduce the bore to 1/2" . Cutters with 1-1/4" bore include 2 reduction bushings (1" x 1-1/4" ) which will reduce the bore to 1" .



| SPECIFICATIONS                      |                                                               |
|-------------------------------------|---------------------------------------------------------------|
| <b>Manufacturer</b>                 | Amana Tool                                                    |
| <b>Bore</b>                         | 1/2 & 3/4 in                                                  |
| <b>Cut Height, Length, or Width</b> | 3/8 in                                                        |
| <b>Note</b>                         | Due to size, furnished with only one 1/2 in x 3/4 in bushing. |