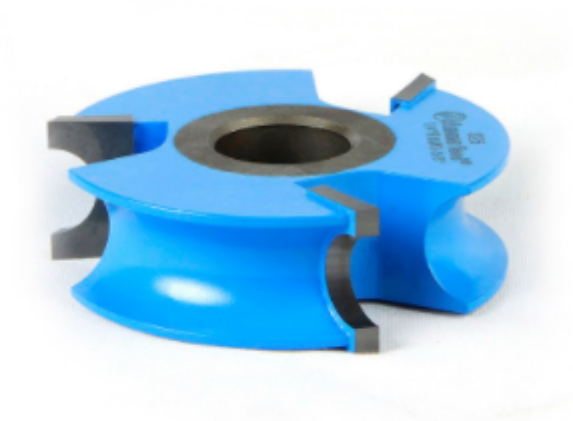


Edge of Arlington Saw & Tool, Inc.

124 South Collins
Arlington, TX 76010
Phone: 817-461-7171 • Fax: 817-795-6651
Toll Free: 888-461-7171
Email: info@eoasaw.com
Website: www.eoasaw.com



**Item #925, Amana Tool Carbide-Tipped
3-Wing Bullnose 1/4 Radius x 1/2 in
Bead Radius x 2-5/8 Dia x 13/16 x 1/2 &
3/4 Bore
\$78.19**

Thank you for shopping with us!



SPECIFICATIONS	
Manufacturer	Amana Tool
B1	1/2 in Bead
Cut Height, Length, or Width	13/16 in
Diameter (D1)	2 1/8 in
Note	Rub collar for 3/4 in arbor only.
Radius	1/4 in