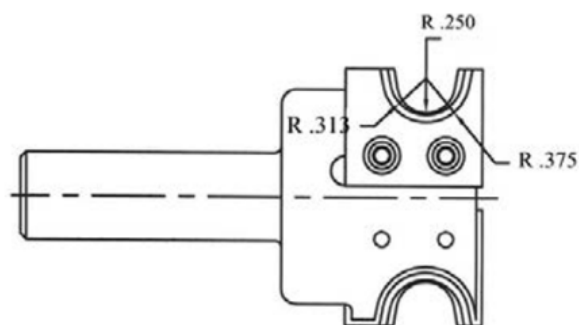


## Edge of Arlington Saw & Tool, Inc.

124 South Collins  
Arlington, TX 76010  
Phone: 817-461-7171 • Fax: 817-795-6651  
Toll Free: 888-461-7171  
Email: [info@eoasaw.com](mailto:info@eoasaw.com)  
Website: [www.eoasaw.com](http://www.eoasaw.com)

---



Body 8230 for material  
thickness of 1/2" to 3/4"

### **Item #Kit 8230-INS-8231, Vortex Series 8200 Multi-Profile Bull Nose Insert Body: 8230 BODY W/ INS-8231 INSERTS \$506.87**

Thank you for shopping with us!

Series 8200 Multi-Profile insert cutters are designed to perfectly bull nose the material, providing superior cut quality only precision insert tooling can provide. Two multi-profile tool bodies are available from stock and will accept multiple different radii inserts to fit your needs.



.



SPECIFICATIONS	
<b>Manufacturer</b>	Vortex Tool
<b>Material Thickness</b>	1/2 in thru 3/4 in
<b>Shank</b>	3/4 in
<b>Part Desc</b>	Insert Body 8230 w/ Insert INS-8231 Insert