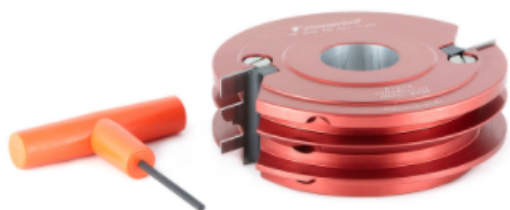


Edge of Arlington Saw & Tool, Inc.

124 South Collins
Arlington, TX 76010
Phone: 817-461-7171 • Fax: 817-795-6651
Toll Free: 888-461-7171
Email: info@eoasaw.com
Website: www.eoasaw.com



Item #61273, Amana Tool Insert Carbide 2-Wing Stile & Rail 4-3/4 Dia x 1-1/2 x 1-1/4 Bore Profile #2 Steel (Industrial)

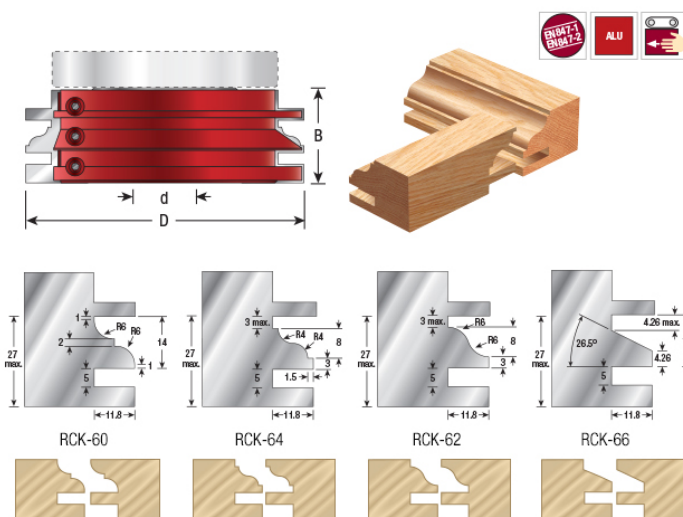
\$190.58

Thank you for shopping with us.

Cutterhead in hard wearing aluminum alloy with one-sided tungsten carbide knives, utilizing the same knives for both stile and rail cuts by simply adjusting the spindle height of your shaper. Same tool body accepts all four different profiles.

3mm T-handle hex key included. To change profiles, order individual knives separately. All patterns are designed for 7/8" through 1" thick materials.

Optional replacement bearing #61609 (98mm x 1 1/4" x 15mm).



SPECIFICATIONS

Manufacturer	Amana Tool
Diameter	4 3/4 in
Bore	1 1/4 in
Cut Height, Length, or Width	40 mm
Max t	11.8mm (15/32 in)
Overall Length	
RPM	6,400 to 8,400
Teeth	2