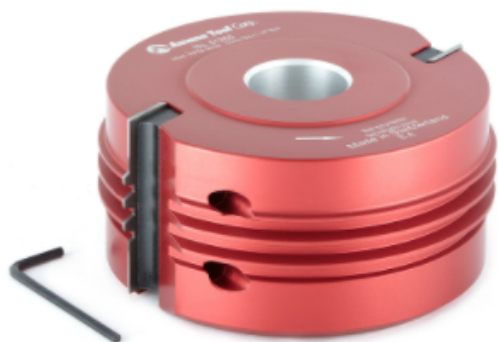


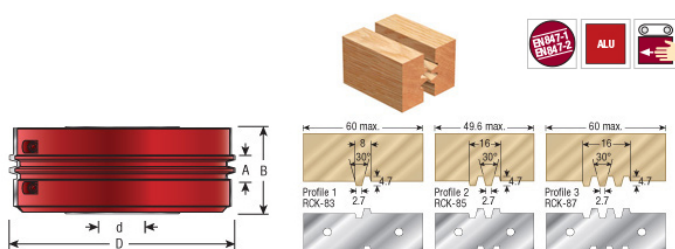
Edge of Arlington Saw & Tool, Inc.

124 South Collins
Arlington, TX 76010
Phone: 817-461-7171 • Fax: 817-795-6651
Toll Free: 888-461-7171
Email: info@eoasaw.com
Website: www.eoasaw.com



Item #61264, Amana Tool Insert Carbide Steel Glue Joint Cutter 140mm (5-1/2) Dia x 50mm (2 in) x 1-1/4 Bore (Industrial)

Thank you for shopping with us! Cutterhead bodies in hard wearing aluminum or steel, complete with tungsten carbide knives. Suitable for producing 'finger-style' reversible glue joints in softwood, hardwood, and man-made boards on a spindle moulder.



SPECIFICATIONS

Diameter	5 1/2 in
Bore	1 1/4 in
Cut Height, Length, or Width	2 in
Manufacturer	Amana Tool
RPM	5,400 to 8,800
Knives	RCK-85