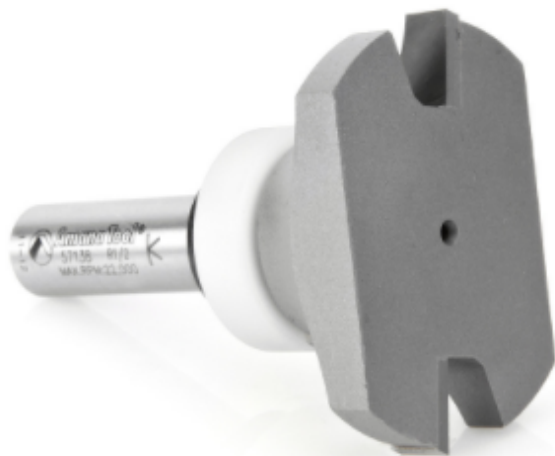


Edge of Arlington Saw & Tool, Inc.

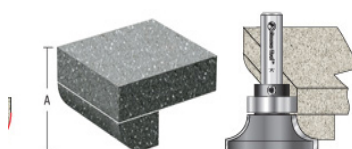
124 South Collins
Arlington, TX 76010
Phone: 817-461-7171 • Fax: 817-795-6651
Toll Free: 888-461-7171
Email: info@eoasaw.com
Website: www.eoasaw.com



Item #57138, Amana Tool Carbide-Tipped Round Under Solid Surface 2-1/8 Dia x 3/4 x 1/2 Radius x 1/2 Inch Shank

\$98.70

Edge of Arlington offers free shipping in the United States when you choose flat rate shipping.



Round the lower edge of a counter with the router resting on the upper surface. No need to turn over the heavy material. This tool is especially useful for "job-site" work. (To complete a full 180° bullnose on 1/2", 1", 1 1/2", or 2" thick stock, use the corner rounding bit with the radius bearing.) Furnished with Ultra-Glide™ non-marring Delrin®-sleeved ball bearing guide.



SPECIFICATIONS	
Cut Depth	1 in
Cut Height, Length, or Width	3/4 in
Flute	2 w/Bearing
Manufacturer	Amana Tool
Note	
Overall Length	2 7/8 in
Radius	1/2 in
Shank	1/2 in