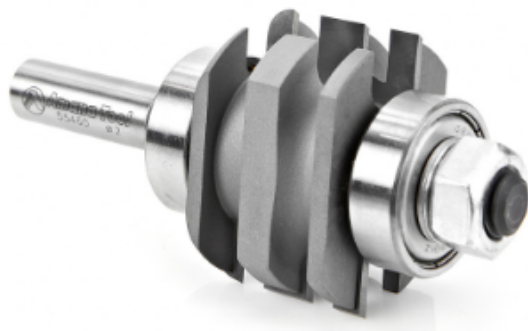


Edge of Arlington Saw & Tool, Inc.

124 South Collins
Arlington, TX 76010
Phone: 817-461-7171 • Fax: 817-795-6651
Toll Free: 888-461-7171
Email: info@eoasaw.com
Website: www.eoasaw.com



Item #55460, Amana Tool Carbide-Tipped One-Piece Concave Stile & Rail 2" Dia x 1-9/32" CH x 7/32" Radius x 1/2" Shank \$55.58

Thank you for shopping with us! Amana Tool Carbide-Tipped One-Piece Concave Stile & Rail 2" Dia x 1-9/32" CH x 7/32" Radius x 1/2" Shank These one-piece concave stile & rail bits are an easy and effective technique for creating cabinet door frames. Simply adjust the height of the bit accordingly in the router table to cut the profile cut (with bit lowered in the table) and the cope cut (with bit raised in the table). For 3/4" thick frames. Replacement parts: bearing #47724 (2 required); nut #67131; washer #67125



SPECIFICATIONS	
Manufacturer	Amana Tool
Diameter	2 in
Cut Height, Length, or Width	1 9/32 in
Diameter (D1)	1 1/4 in
Flute	2
Overall Length	4 3/32 in
Radius	7/32 in
Shank	1/2 in
Bearing(s)	47744
Replacement Parts	Nut #67131; Washer #67125