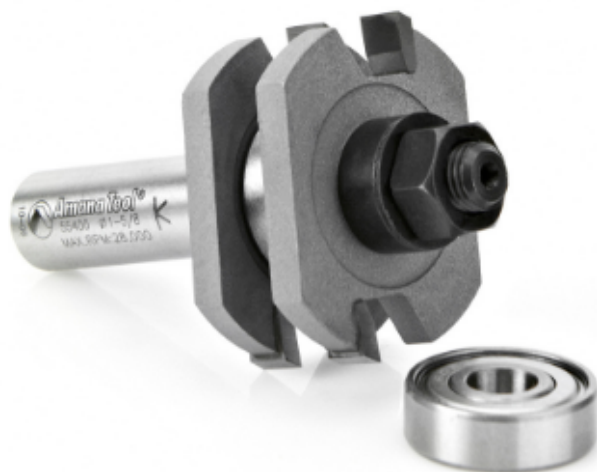


Edge of Arlington Saw & Tool, Inc.

124 South Collins
Arlington, TX 76010
Phone: 817-461-7171 • Fax: 817-795-6651
Toll Free: 888-461-7171
Email: info@eoasaw.com
Website: www.eoasaw.com



Item #55400, Amana Tool Carbide-Tipped Tongue & Groove 3/8" Kerf x 1-5/8" Dia x 1/2" Shank Assembly for 3/4 - 1-1/8 Material 2-Wing w/Ball Bearing Guide
\$84.19

Thank you for shopping with us! Amana Tool Carbide-Tipped Tongue & Groove 3/8" Kerf x 1-5/8" Dia x 1/2" Shank Assembly for 3/4 - 1-1/8 Material 2-Wing w/Ball Bearing Guide With a table-mounted router and this assembly, cut perfectly fitted tongue and groove joints on stock between 3/8" and 1 1/8" thick. The tool consists of an arbor with an integral shank, two identical removable slotting cutters, and a pair of bearings. To cut tongues, sandwich one bearing between the two cutters (as in assembly 'A' shown in images). To cut slots, mount one cutter between the two bearings (as in assembly 'B' shown in images). Replacement parts, see below to purchase: 55354 - 1/4" Kerf Cutters (2 required) for Tool 55400 55353 - 3/8" Kerf Cutters (2 required) for Tool 55401 47612 - 1/2" Shank Arbor with Nut for Tool 55400 47613 - 1/2" Shank Arbor with Nut for Tool 55401 47708 - Ball Bearing Guide (2 required) 55356 - .05mm Shims (3 required) 55357 - .10 Shims (3 required) 55402 - 1mm Black Washer 55368 - 6mm Steel Spacer Full color instruction manual included. Tongue is cut as shown in **Assembly A**. For groove cut, reassemble the tool as shown in **Assembly B**.

SPECIFICATIONS	
Manufacturer	Amana Tool
Diameter	1 5/8 in
Cut Depth	3/8 in
Cut Height, Length, or Width	3/4 in
Kerf	1/4 in
No. of Pieces	1

SPECIFICATIONS	
Overall Length	3 in
Shank	1/2 in
Wings	2-Wing w/Ball Bearing Guide