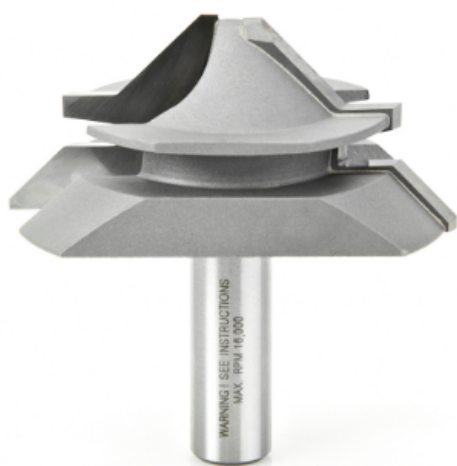


## Edge of Arlington Saw & Tool, Inc.

124 South Collins  
Arlington, TX 76010  
Phone: 817-461-7171 • Fax: 817-795-6651  
Toll Free: 888-461-7171  
Email: [info@eoasaw.com](mailto:info@eoasaw.com)  
Website: [www.eoasaw.com](http://www.eoasaw.com)

---



### **Item #55390, Amana Tool 45° Lock Miter Carbide-Tipped 2 11/16" D x 1 3/16" CH x 1/2" Shk 2-Flute \$95.29**

Thank you for shopping with us!

The lock miter is an interlocking edge-to-edge joint, typically used at the corners of casework. Used in a table-mounted router, run at reduced speed, this bit cuts both halves of the joint. The same setup of bit and fence cuts both parts. One part is laid flat on the tabletop and fed across the cutter. The second is braced vertically against the fence and fed across the cutter. For best results, use in a table-mounted router. Full color instruction manual included.

SPECIFICATIONS	
Manufacturer	Amana Tool
Diameter	2 11/16 in
Diameter (D1)	9.2mm
Cut Height, Length, or Width	1-3/16 in
Flute	4
Overall Length	2 5/8 in
Shank	1/2 in
Angle	45 deg