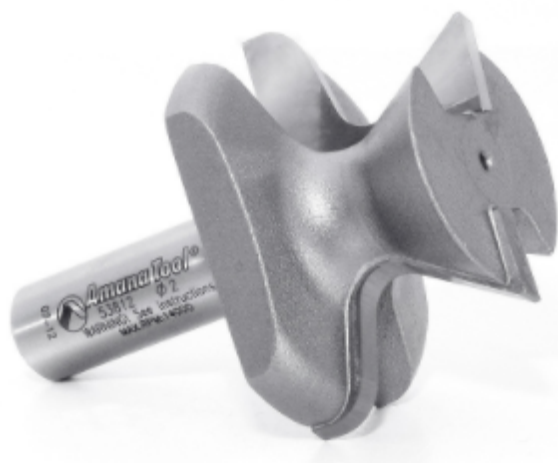


Edge of Arlington Saw & Tool, Inc.

124 South Collins
Arlington, TX 76010
Phone: 817-461-7171 • Fax: 817-795-6651
Toll Free: 888-461-7171
Email: info@eoasaw.com
Website: www.eoasaw.com



Item #53812, Amana Tool Carbide-Tipped Finger Grip /Drawer Pull / Door Lip 1/4" x 3/16" Radius x 2" Dia x 1/2" Shank \$87.34

Thank you for shopping with us! Amana Tool Carbide-Tipped Finger Grip /Drawer Pull / Door Lip 1/4" x 3/16" Radius x 2" Dia x 1/2" Shank Produce clean, modern chests and cabinets uninterrupted by hardware pulls and knobs by integrating the pulls into the doors, drawers, and lids. These one-pass cutters offer many appearance and ergonomic options, providing positive grips and softened, easy-on-the-fingers edges. All bits can be used in CNC and table-mounted routers. Larger diameter cutters will work in edge-guide or template-guide equipped handheld routers.

SPECIFICATIONS	
Manufacturer	Amana Tool
Diameter	2 in
Cut Height, Length, or Width	1 1/4 in
Diameter (D1)	3/4 in
Flute	2
Overall Length	2 3/4 in
Radius	1/4 in
R1/Radius	3/16 in
Shank	1/2 in