

Edge of Arlington Saw & Tool, Inc.

124 South Collins
Arlington, TX 76010
Phone: 817-461-7171 • Fax: 817-795-6651
Toll Free: 888-461-7171
Email: info@eoasaw.com
Website: www.eoasaw.com



Item #51726, Amana Tool AlTiN Coated CNC Steel, Stainless Steel & Composite Square Mini End Mill 0.045" D x 1/8" Shank - Upcut \$30.26

Thank you for shopping with us!

High performance, designed for micro applications. Micro machining applications involve miniature tooling that requires very high attention to tolerances and detail in their construction. These end mills incorporate 30 degree helixes and AlTiN coating to ensure a high degree of precision. Miniature end mills also routinely require RPMs in excess of 40,000 RPMs or more, so attention to both RPM capacity and accurate chip-loads is mandatory.

Choose 2-flute endmills for efficient vertical plunging, pocketing, and slotting operations. 4-fluted tools offer the promise of improved surface finishes, longer service life, and increased feed rates with peripheral milling applications.

Excellent for cutting:

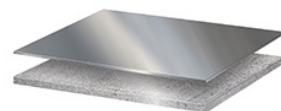
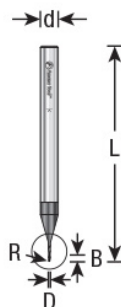
- Stainless Steel •Steel •Titanium •Cast Iron •Cermets*
- Magnesium •Plastic

*Cermets are composites in which ceramic materials and metals join together.

AlTiN coating has many benefits: •Extra wear resistance •Allows for faster feed and speed rates •Cutting edge protected from wear •Better chip evacuation •Less heat build up •Superior cutting quality and extended tool life

Please note: For optimal results and to extend tool life when trimming/cutting, please use mist lubricant system or air cooling. Please inspect cut and adjust accordingly.

Warning: Due to the extremely small diameters involved, please exercise caution to the accurate calculations of all feed and speed rates.



SPECIFICATIONS

Manufacturer	Amana Tool
Diameter	0.045 in
Cut Height, Length, or Width	0.135 in
Flute	4
Note	Warning: Due to the extremely small diameters involved, please exercise caution to the accurate calculations of all feed and speed rates.
Overall Length	1 1/2 in
Radius	--
Shank	1/8 in
Type	Square End