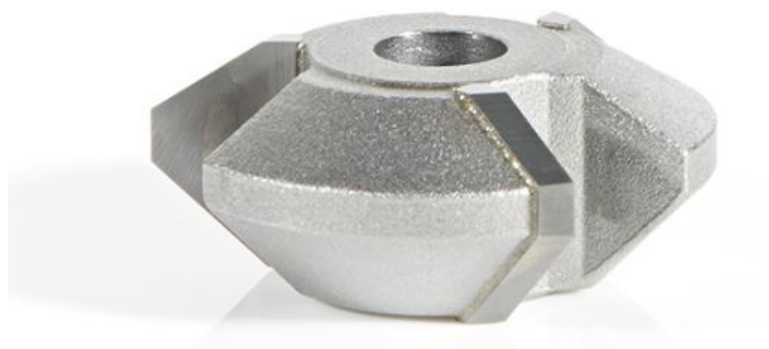


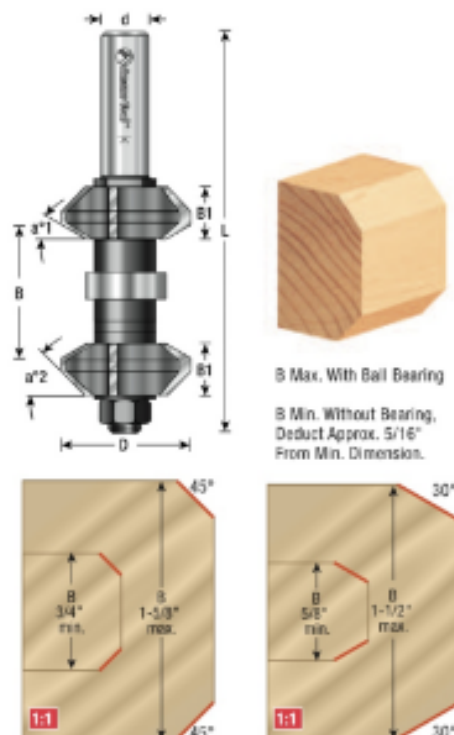
Edge of Arlington Saw & Tool, Inc.

124 South Collins
Arlington, TX 76010
Phone: 817-461-7171 • Fax: 817-795-6651
Toll Free: 888-461-7171
Email: info@eoasaw.com
Website: www.eoasaw.com



Item #49732, Amana Tool Variable Double Chamfer Assembly Top Replacement Cutting R/H for use with 49730

Thank you for shopping with us! Amana Tool Variable Double Chamfer Assembly Top Replacement Cutting R/H for use with 49730 Chamfer both corners of an edge in one pass with this assembly. Switch from 30° or 45° chamfers by switching cutter positions on the arbor. Interchangeable spacers adjust assembly to accommodate different stock thicknesses. The assembly includes the arbor, a pair of multi-angle cutters, pilot bearing, spacers, and shims.



SPECIFICATIONS

Manufacturer	Amana Tool
---------------------	------------

Diameter	--
-----------------	----

B1	--
-----------	----

Replacement Parts	--
--------------------------	----

Overall Length	--
-----------------------	----

SPECIFICATIONS

Part Desc	Variable Double Chamfer Assembly Top Replacement Cutting R/H for use with 49730
Shank	--
Wings	--
Angle	--
Bearing(s)	--