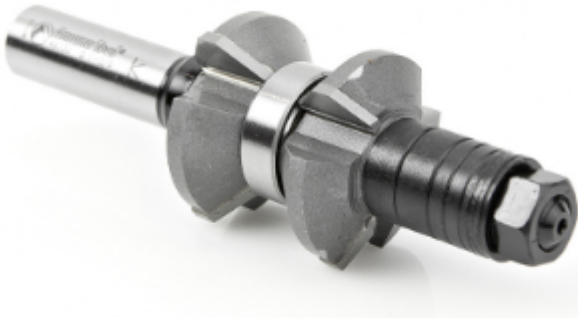


Edge of Arlington Saw & Tool, Inc.

124 South Collins
Arlington, TX 76010
Phone: 817-461-7171 • Fax: 817-795-6651
Toll Free: 888-461-7171
Email: info@eoasaw.com
Website: www.eoasaw.com



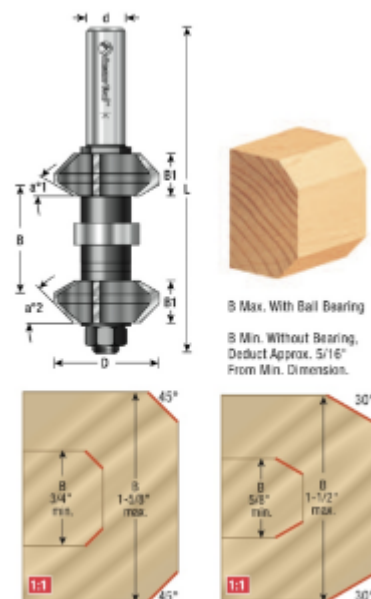
**Item #49730, Amana Tool
Carbide-Tipped Variable Double
Chamfer 30° Top x 45° Bottom x
1-3/8" Dia x 9/16" x 1/2" Shank w/
Center Ball Bearing
\$158.63**

Edge of Arlington offers free shipping in the United States when you choose flat rate shipping.

Amana Tool Carbide-Tipped Variable Double Chamfer 30° Top x 45° Bottom x 1-3/8" Dia x 9/16" x 1/2" Shank w/ Center Ball Bearing

Chamfer both corners of an edge in one pass with this assembly. Switch from 30° or 45° chamfers by switching cutter positions on the arbor. Interchangeable spacers adjust assembly to accommodate different stock thicknesses. The assembly includes the arbor, a pair of multi-angle cutters, pilot bearing, spacers, and shims.

Replacement parts are available separately (see below)



SPECIFICATIONS	
B1	9/16 in
Manufacturer	Amana Tool
Overall Length	4 1/4 in
Shank	1/2 in
Wings	3-Wing w/Ball Bearing Guide
Angle	