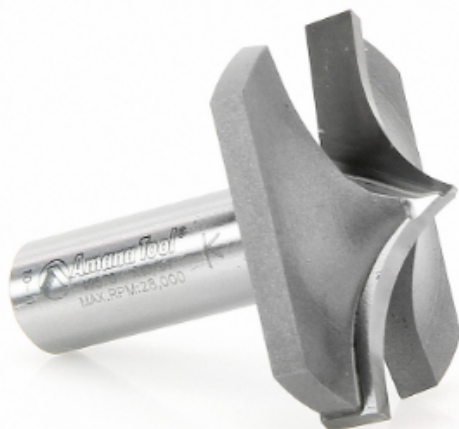


## Edge of Arlington Saw & Tool, Inc.

124 South Collins  
Arlington, TX 76010  
Phone: 817-461-7171 • Fax: 817-795-6651  
Toll Free: 888-461-7171  
Email: [info@eoasaw.com](mailto:info@eoasaw.com)  
Website: [www.eoasaw.com](http://www.eoasaw.com)

---



**Item #49570, Amana Tool Carbide-Tipped  
Plunge Ovolo w/ Center Pt 23/32" Radius x  
1-3/4" Dia x 23/32" x 1/2" Shank  
\$73.84**

Thank you for shopping with us! Amana Tool Carbide-Tipped Plunge Ovolo w/ Center Pt 23/32" Radius x 1-3/4" Dia x 23/32" x 1/2" Shank Rout decorative grooves on solid wood or MDF panels and surfaces with a handheld or CNC router. Form edges using an edge guide.

SPECIFICATIONS	
Manufacturer	Amana Tool
Diameter	1 3/4 in
Cut Height, Length, or Width	23/32 in
Flute	2
Overall Length	2 3/16 in
Radius	23/32 in
Shank	1/2 in