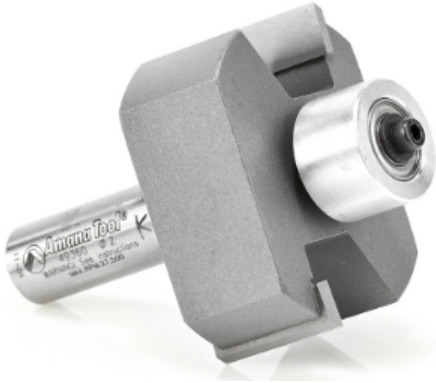


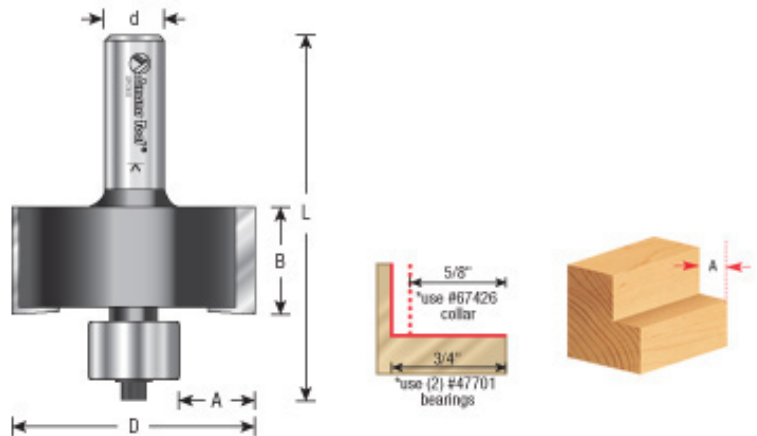
## Edge of Arlington Saw & Tool, Inc.

124 South Collins  
Arlington, TX 76010  
Phone: 817-461-7171 • Fax: 817-795-6651  
Toll Free: 888-461-7171  
Email: [info@eoasaw.com](mailto:info@eoasaw.com)  
Website: [www.eoasaw.com](http://www.eoasaw.com)



### Item #49360, Amana Tool Superabbet™ Carbide-Tipped 2-Flute 2" Dia, 1/2" Shank w/Ball Bearing Guide \$114.47

Thank you for shopping with us! *Recommended by Wilsonart International.* This ingenious tool features both interchangeable cutting edges and an interchangeable guide collar to enable you to cut a wide range of rabbets. Changing the collars on the twin ball bearing guide steps the cut width in 1/16" increments from flush through 3/4" with five extra "plywood" sizes. Between the standard and **optional collars**, there are 18 different rabbet sizes available. The deep guide collar design adds stability to the tool for handheld router operations. The basic 2" diameter bit includes a hex key, instructions, and all necessary parts for 5/8" and 3/4" width rabbets. Replacement screw for bearing #67094. Replacement washer for bearing #67202. Replacement spacer bearing #67206. Use in a table-mounted router. Not for use in a handheld router! **Warning:** Maximum RPM - 22,000 The "RC" version has extra-long double-edged carbide inserts, which enables the bit to cut 30mm high. Inserts can be rotated or replaced without removing the bit from the router.



SPECIFICATIONS	
Manufacturer	Amana Tool
Cut Depth	5/8 in & 3/4 in
Diameter	2 in
Cut Height, Length, or Width	7/8 in
Flute	2 w/Bearing
Replacement Parts	Replacement screw for bearing #67094. Replacement washer for bearing #67202. Replacement spacer bearing #67206.
Bearing(s)	47701 (2)
Note	Use in a table-mounted router. Not for use in a handheld router!

SPECIFICATIONS	
Overall Length	3 in
RPM	Warning: Maximum RPM - 22,000
Shank	1/2 in