

## Edge of Arlington Saw & Tool, Inc.

124 South Collins

Arlington, TX 76010

Phone:817-461-7171 • Fax: 817-795-6651

Toll Free: 888-461-7171

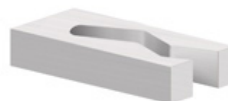
Email: [info@eoasaw.com](mailto:info@eoasaw.com)

Website: [www.eoasaw.com](http://www.eoasaw.com)



### Item #46110-M, Amana Tool End Mill Point Diamond Pattern Composite Cutting 6mm Dia x 19mm x 6mm Shank \$33.04

Thank you for shopping with us! Amana Tool End Mill Point Diamond Pattern Composite Cutting 1/4 x 3/4 x 1/4 Shank - Fine Cut designed especially for cutting fiberglass, tile, and other highly abrasive materials. Works well on epoxies made with carbon, glass, and composite materials. Its diamond-pattern cutting edges have 'Upcut' and 'Downcut' angles to grind through the work. Cuts evenly in all directions. Excellent for cutting: -Composites - Fiberglass -Fiberglass PCB Board -Fiber Reinforced Plastic (FRP) -Glass Fiber Reinforced Polymer - Plastic Materials (GFR) -Glass Reinforced Plastic (GRP) - G10 -G11 -Phenolic -Phenolic "Garolite" G-7 Maximum RPM: 28,000



SPECIFICATIONS	
Manufacturer	Amana Tool
Diameter	6mm
Cut Height, Length, or Width	19mm
Flute	2
Overall Length	50mm
RPM	28,000
Shank	6mm
Type	Fine