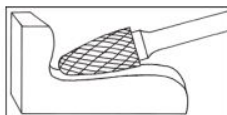


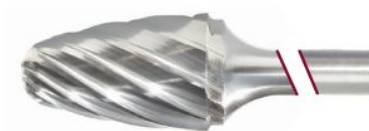
## Edge of Arlington Saw & Tool, Inc.

124 South Collins  
Arlington, TX 76010  
Phone: 817-461-7171 • Fax: 817-795-6651  
Toll Free: 888-461-7171  
Email: [info@eoasaw.com](mailto:info@eoasaw.com)  
Website: [www.eoasaw.com](http://www.eoasaw.com)

### Application: Narrow Contours



**DOUBLE CUT**



**ALUMA CUT**

**Item #18569, Viking Drill & Tool SF  
Tree Shape Radius - 6" Extended  
Shank Length: Narrow Contours  
\$34.80**

Thank you for shopping with us!

**Application:** Narrow Contours



### SPECIFICATIONS

<b>Manufacturer</b>	Viking Drill & Tool
<b>Diameter</b>	1/2 in Cut Dia
<b>Cut Height, Length, or Width</b>	1 in Cut Length
<b>Shank</b>	1/4 in Shank Dia - 6 in Extended Shank Length
<b>Size</b>	SF-5L6
<b>Style</b>	Tree Shape Radius, 6 in Extended Shank Length