

Edge of Arlington Saw & Tool, Inc.

124 South Collins

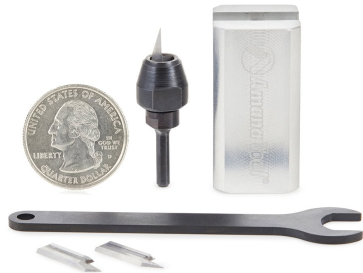
Arlington, TX 76010

Phone: 817-461-7171 • Fax: 817-795-6651

Toll Free: 888-461-7171

Email: info@eoasaw.com

Website: www.eoasaw.com



Amana Tool 4-Piece Mini In-Groove Insert Engraving Tool Body & Knives 1/8 Inch Shank Set

Thank you for shopping with us! The 4-piece In-Groove collection contains industrial insert solid carbide knives that can quickly and easily be interchanged while the tool body remains mounted in the CNC machine, minimizing downtime and helping maintain consistent cutting accuracy. Solid carbide insert carbide knives produce crisp clean cuts and last at least twice as long as comparable solid carbide bits. CNC tool bodies are expertly balanced for virtually no vibration to provide superior cutting results. Router collet reducer RB-102 (1/4 to 1/8) available for 1/8 shank bits. Excellent solution for etching. Includes: RC-1074 - 1/8" Shank Tool Body RCK-505 - 45° V Tip Insert Carbide Knife RCK-506 - 60° V Tip Insert Carbide Knife RCK-507 - 90° V Tip Insert Carbide Knife Wrench Aluminum Mounting Block Designed for cutting and engraving: Laminated materials Veneers MDF Plastics Soft Wood Hard Wood Phenolic Solid surface Carbon fiber PCB board HDPE King Starboard® / Marine Building Material Aluminum, brass & copper* *V-Tip inserts can also engrave aluminum, brass & copper.

| Item # | Manufacturer | Part Desc | Includes | Overall Length | Shank | Price |
|---------|--------------|----------------------------|---|----------------|--------|-------|
| AMS-220 | Amana Tool | 4-Piece Mini In-Groove Set | RC-1074 1/8 Shank Tool Body; RCK-505 45 V Tip Insert Carbide Knife; RCK-506 60 V Tip Insert Carbide Knife; RCK-507 90 V Tip Insert Carbide Knife; Wrench; Aluminum Mounting Block | 1 3/4 in | 1/8 in | \$ |