

Edge of Arlington Saw & Tool, Inc.

124 South Collins

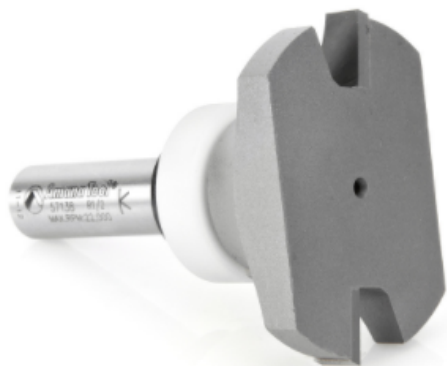
Arlington, TX 76010

Phone: 817-461-7171 • Fax: 817-795-6651

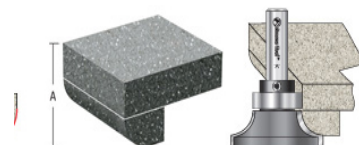
Toll Free: 888-461-7171

Email: info@eoasaw.com


Website: www.eoasaw.com



Amana Tool Round Under 2-Flute with Upper Ball Bearing Guide



Thank you for shopping with us!

Round the lower edge of a counter with the router resting on the upper surface. No need to turn over the heavy material. This tool is especially useful for "job-site" work. (To complete a full 180° bullnose on 1/2", 1", 1 1/2", or 2" thick stock, use the corner rounding bit with the radius bearing.) Furnished with Ultra-Glide™ non-marring Delrin®-sleeved ball bearing guide. 

| Item # | Manufacturer | Diameter | Cut Height, Length, or Width | Cut Depth | Replacement Parts | Flute | Bearing(s) | Overall Length | RPM | Shank | Price |
|--------|--------------|----------|------------------------------|-----------|-------------------|-------------|----------------------------|----------------|------------|--------|-----------------|
| 57138 | Amana Tool | 2 1/8 in | 3/4 in | 1 in | Collar #47740 | 2 w/Bearing | Ultra-Glide Bearing #47737 | 2 7/8 in | Max 14,000 | 1/2 in | \$ |
| 57140 | Amana Tool | 2 5/8 in | 1 in | 1 1/2 in | Collar #47740 | 2 w/Bearing | Ultra-Glide Bearing #47737 | 3 in | Max 14,000 | 1/2 in | \$153.83 |