

## Edge of Arlington Saw & Tool, Inc.

124 South Collins

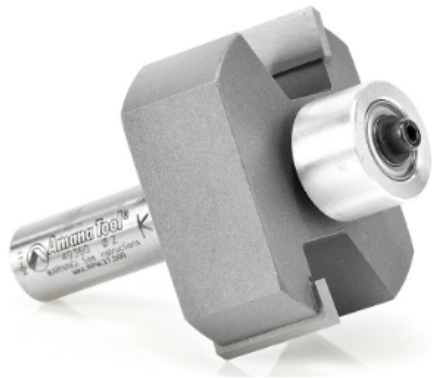
Arlington, TX 76010

Phone: 817-461-7171 • Fax: 817-795-6651

Toll Free: 888-461-7171

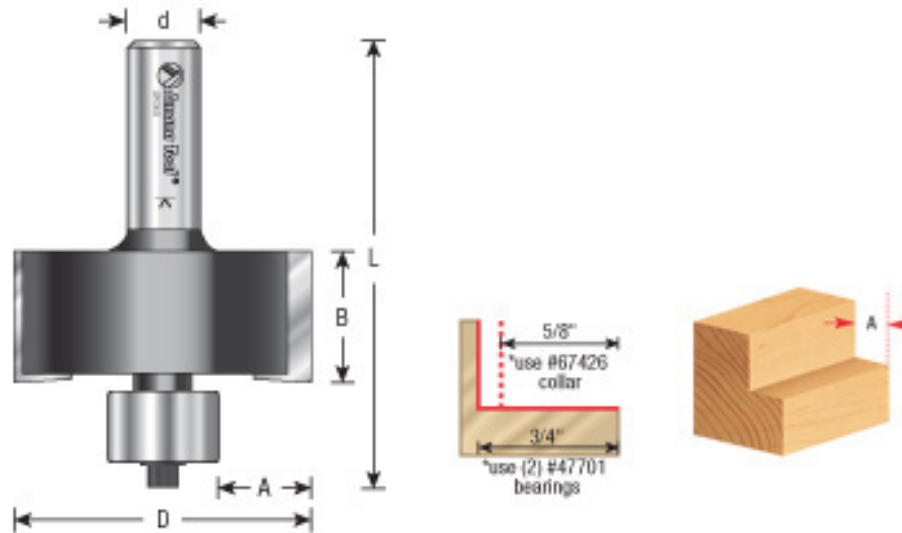
Email: [info@eoasaw.com](mailto:info@eoasaw.com)

Website: [www.eoasaw.com](http://www.eoasaw.com)



### Amana Tool Superabbet™ Carbide-Tipped 2-Flute w/Ball Bearing Guide

Thank you for shopping with us! *Recommended by Wilsonart International.* This ingenious tool features both interchangeable cutting edges and an interchangeable guide collar to enable you to cut a wide range of rabbets. Changing the collars on the twin ball bearing guide steps the cut width in 1/16" increments from flush through 3/4" with five extra "plywood" sizes. Between the standard and **optional collars**, there are 18 different rabbet sizes available. The deep guide collar design adds stability to the tool for handheld router operations. The basic 2" diameter bit includes a hex key, instructions, and all necessary parts for 5/8" and 3/4" width rabbets. Replacement screw for bearing #67094. Replacement washer for bearing #67202. Replacement spacer bearing #67206. Use in a table-mounted router. Not for use in a handheld router! **Warning:** Maximum RPM - 22,000 The **"RC" version** has extra-long double-edged carbide inserts, which enables the bit to cut 30mm high. Inserts can be rotated or replaced without removing the bit from the router.



Item #	Manufacturer	Cut Depth	Diameter	Cut Height, Length, or Width	Flute	Replacement Parts	Bearing(s)	Note	Overall Length	RPM	Shank	Price
49360	Amana Tool	5/8 in & 3/4 in	2 in	7/8 in	2 w/Bearing	Replacement screw for bearing #67094. Replacement washer for bearing #67202. Replacement spacer bearing #67206.	47701 (2)	Use in a table-mounted router. Not for use in a handheld router!	3 in	Warning: Maximum RPM - 22,000	1/2 in	<b>\$104.06</b>